

Lab ID: LXXX

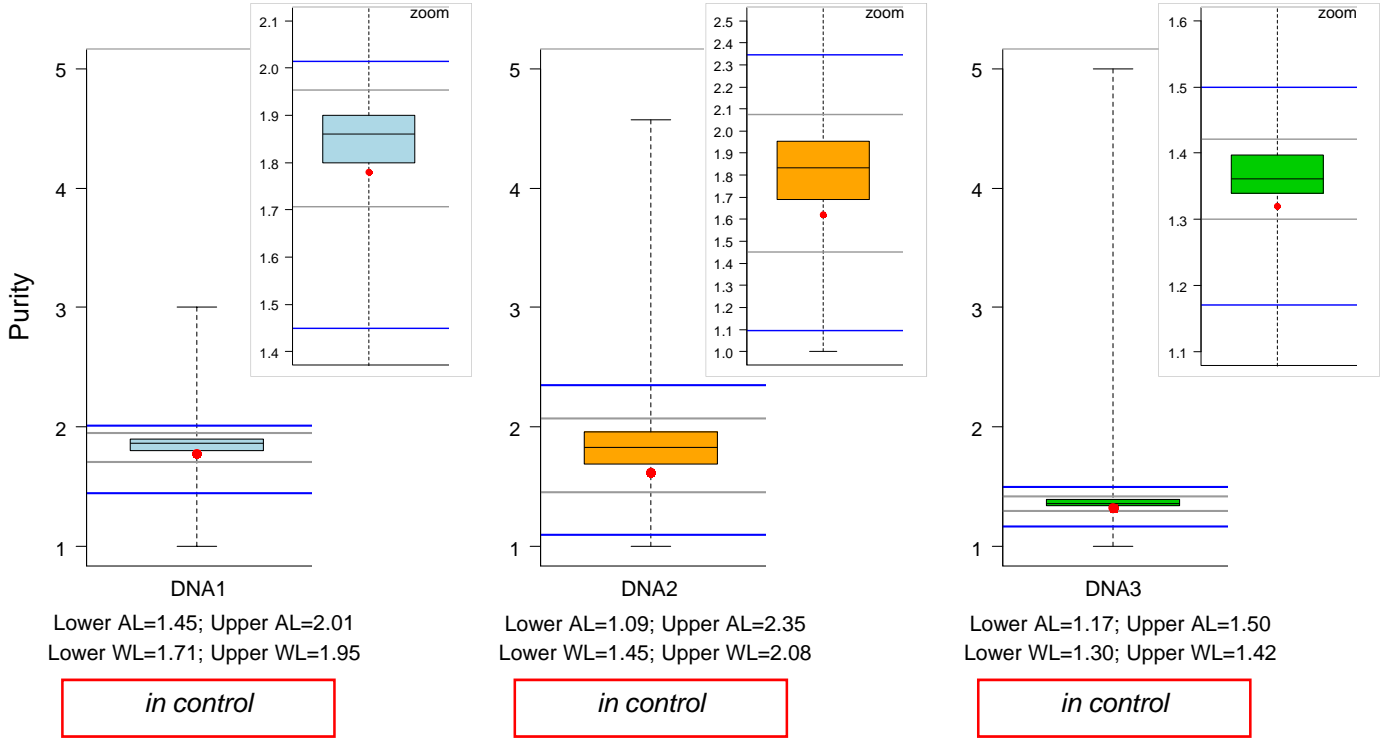
**A. Purity and Concentration of DNA1, DNA2 and DNA3 (pre-extracted DNAs)**

**A.1 Spectrophotometric data provided by your lab**

	260nm	280nm	320nm	Purity	Concentration (ng/μl)	Dilution factor
DNA1	1.397	0.783	.	1.78	69.8	1
DNA2	0.389	0.240	.	1.62	19.4	1
DNA3	1.817	1.373	.	1.32	90.8	1

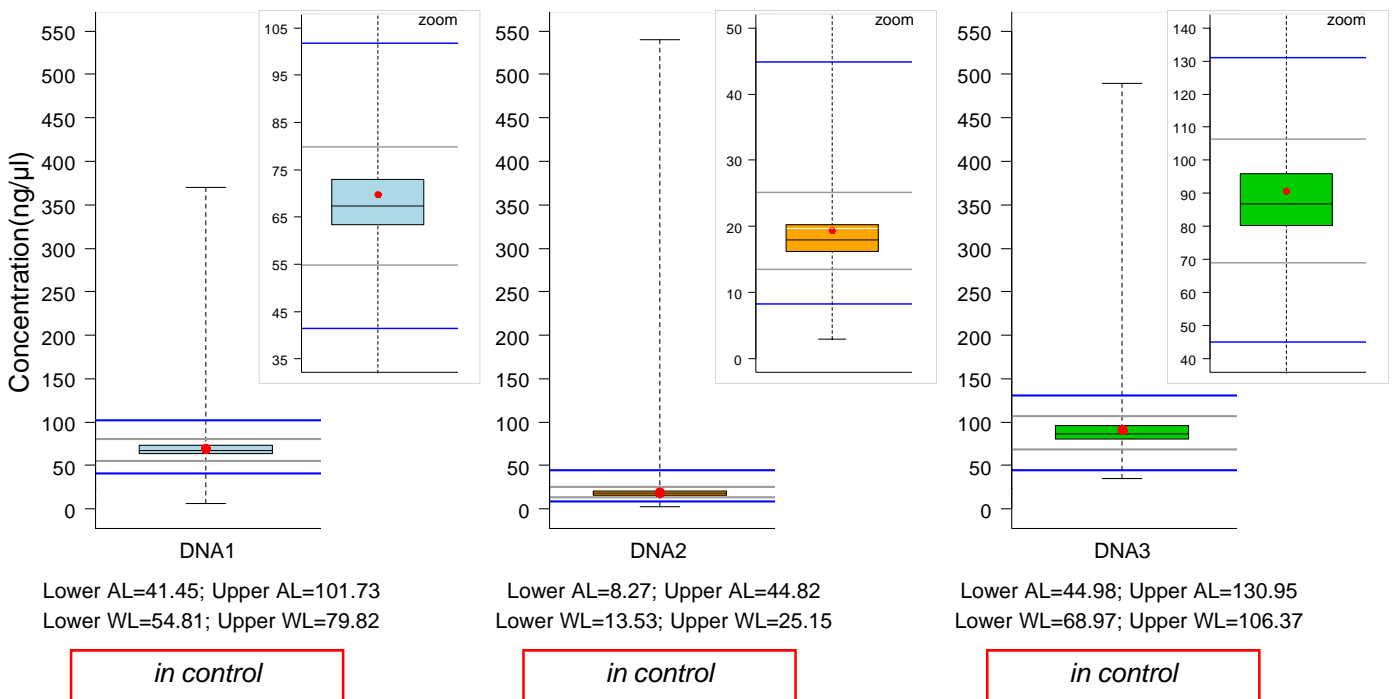
**A.2 Your lab (●) versus overall distribution (N=172) – Purity**

In the figures the blue lines represent the Action Limits (ALs) and the gray lines represent the Warning Limits (WLs).



**A.3 Your lab (●) vs overall distribution (N=174) – Concentration**

In the figures the blue lines represent the Action Limits (ALs) and the gray lines represent the Warning Limits (WLs).



Lab ID: LXXX

**B. Purity and Quantity of DNA4 (DNA extracted from blood)**

**B.1 Spectrophotometric data provided by your lab and by SPIDIA lab**

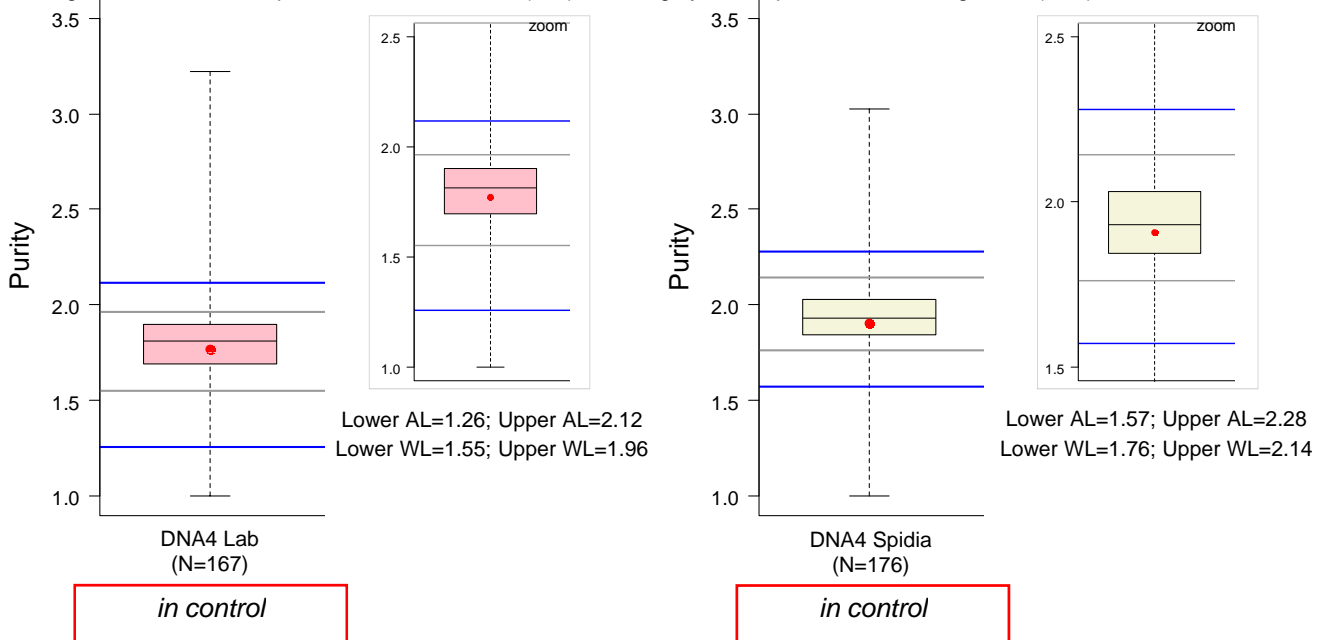
260nm Lab	280nm Lab	320nm Lab	Purity Lab	Quantity (ng/μl) Lab	Purity Spidia	Quantity (ng/μl) Spidia	Dilution factor	Extraction vol. (ul)	Elution vol. (ul)	Buffer
0.877	0.496	.	1.77	21.95	1.906	18.875	1	400	200	Elution Buffer

**B.2 Additional information provided by your lab**

Extraction		Spectrophotometer		Temperature of DNA storage		Time interval (hours)	
producer	supplier	producer	supplier	arrival to extraction	extraction to analysis	arrival to extraction	extraction to analysis
Roche	MagNA Pure LC	peqLab NanoDrop	ND 100	-20 °C	4 °C	19.75 h	5.25 h

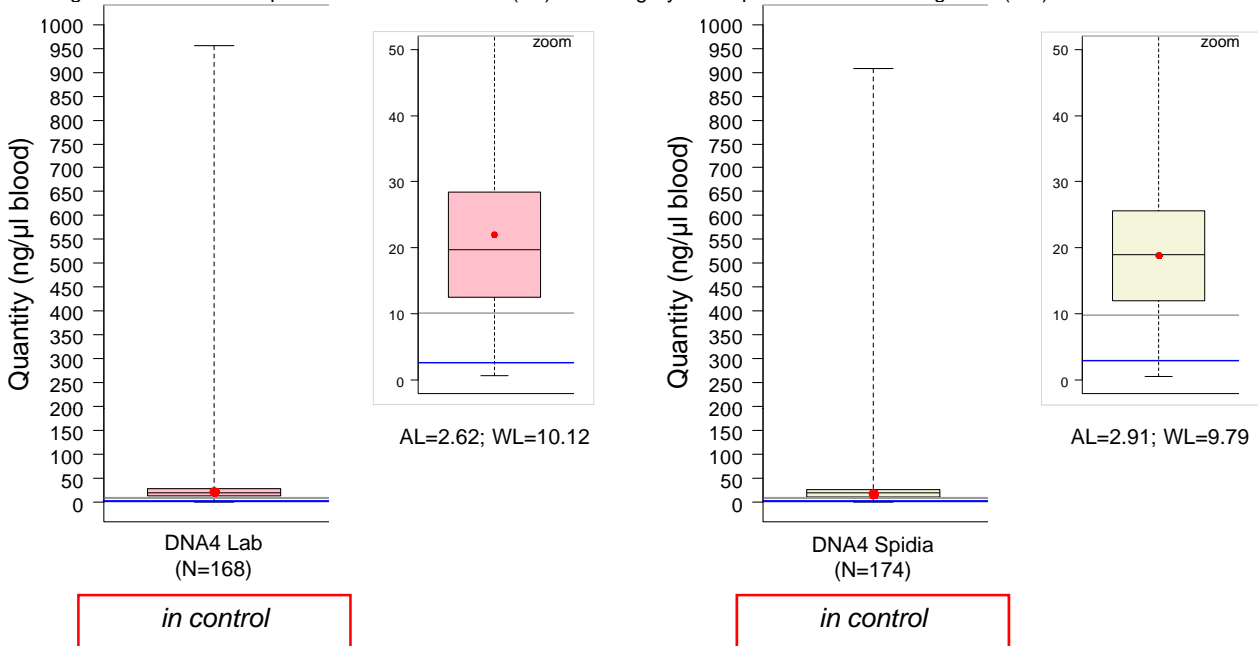
**B.3 Your lab (●) versus overall distribution – Purity**

In the figures the blue lines represent the Action Limits (ALs) and the gray lines represent the Warning Limits (WLs).



**B.4 Your lab (●) versus overall distribution - Quantity**

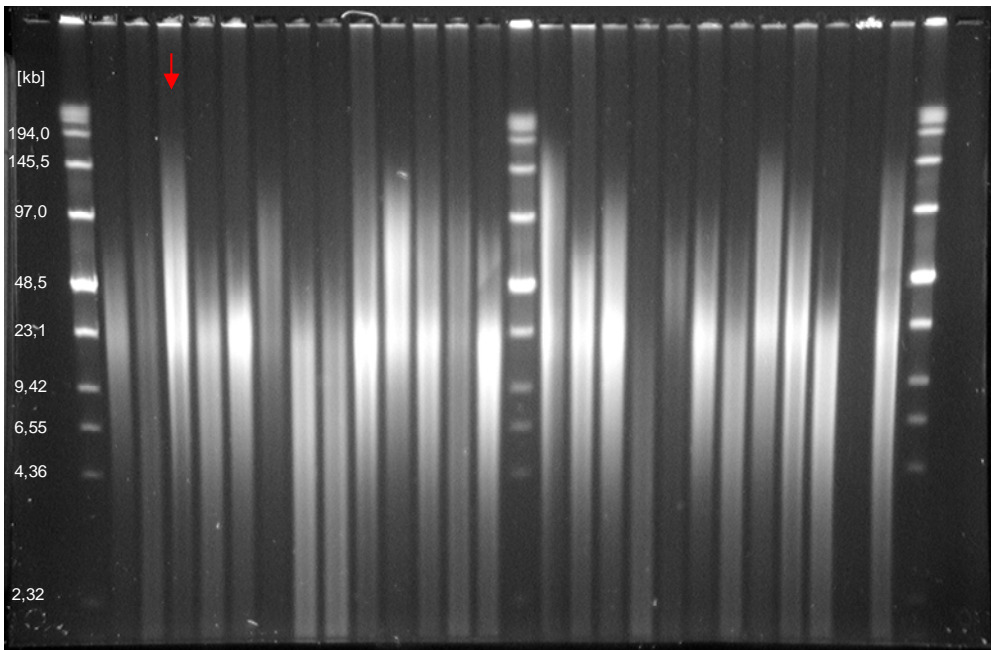
In the figures the blue line represents the Action Limit (AL) and the gray line represents the Warning Limit (WL).



Lab ID: LXXX

**C. Integrity of DNA4 (DNA extracted from blood)**

**C.1 Your lab (↓) - pulse field gel electrophoresis image**

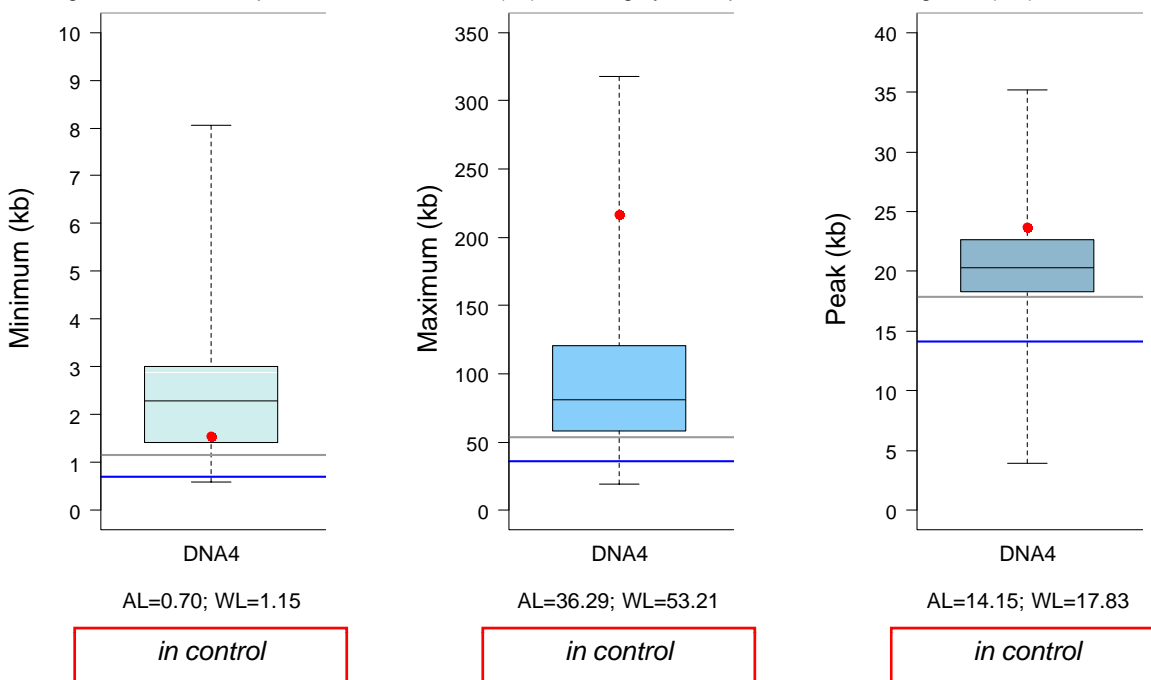


**C.2 ImageJ data of your lab**

Minimum (Kb)	Maximum (Kb)	Peak (Kb)
1.540	216.608	23.683

**C.3 Your lab (●) versus overall distribution (N=157) – ImageJ data**

In the figure the blue line represents the Action Limit (AL) and the gray line represents the Warning Limit (WL).



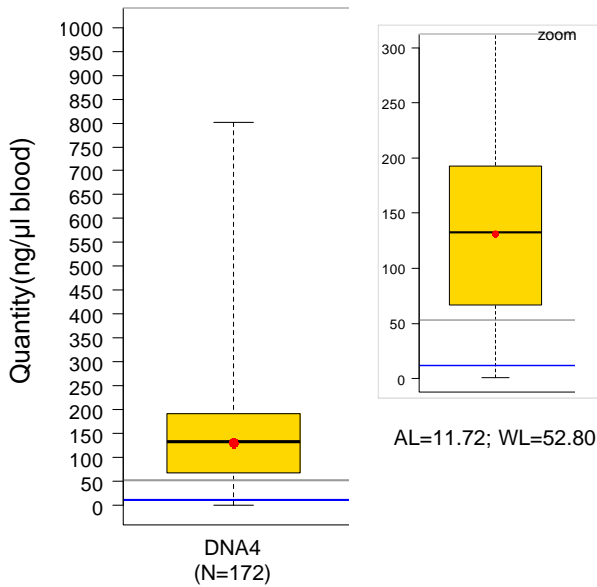
Lab ID: LXXX

D. Quantification of RNaseP by real-time PCR on DNA4 and evaluation of interferences

D.1 Your lab (●) versus overall distribution

Quantification of RNaseP

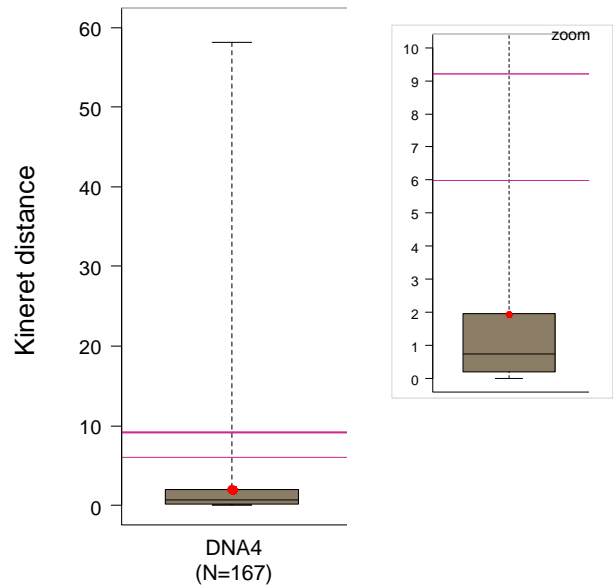
In the figure the blue line represents the Action Limit (AL) and the gray line represents the Warning Limit (WL).



*in control*

Interferences

In the figure the two lines represent the two Kineret threshold for outliers identification: 5.99 (weak outlier) and 9.21 (strong outlier).

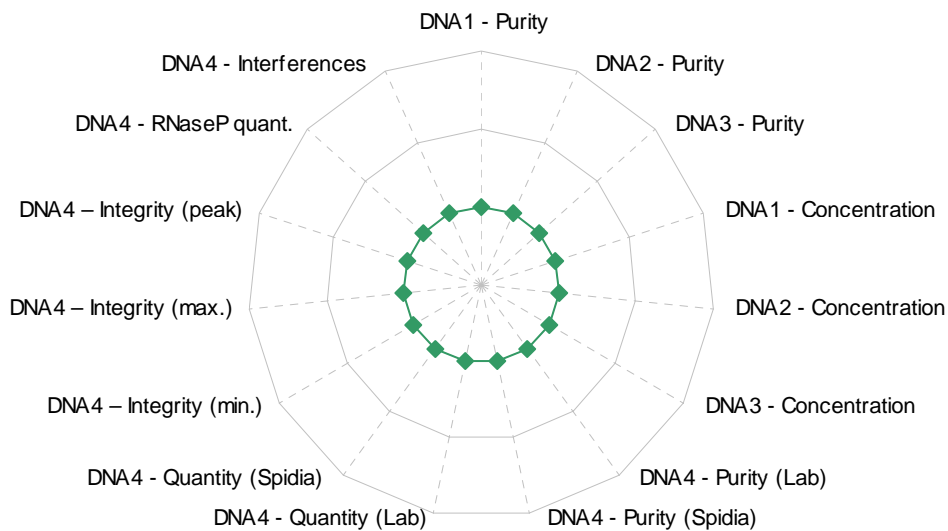


*in control*

Lab ID: LXXX

G. Summary

	Performance		Missing	Comments
DNA1 – Purity	in control			
DNA2 – Purity	in control			
DNA3 – Purity	in control			
DNA1 – Concentration	in control			
DNA2 – Concentration	in control			
DNA3 – Concentration	in control			
DNA4 – Purity (Lab)	in control			
DNA4 – Purity (Spidia)	in control			
DNA4 – Quantity (Lab)	in control			
DNA4 – Quantity (Spidia)	in control			
DNA4 – Integrity (min.)	in control			
DNA4 – Integrity (max.)	in control			
DNA4 – Integrity (peak)	in control			
DNA4 – RNaseP quant.	in control			
DNA4 – Interferences	in control			



This report has been produced with the collaboration of the **University of Florence** (M.Pazzagli, S.Gelmini, C.Orlando, L.Simi, F.Malentacchi), **Fondazione IRCCS Istituto Nazionale dei Tumori of Milan** (P.Verderio, S.Pizzamiglio, C.Ciniselli), **QIAGEN** (R.Wyrich, C.Hartmann) and **TATAA BIOCENTER** (A.Tichopad).